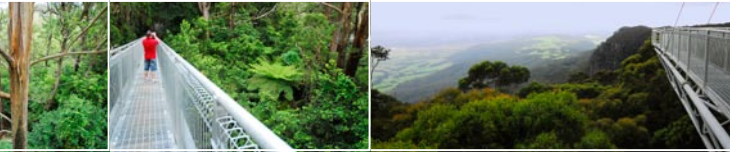
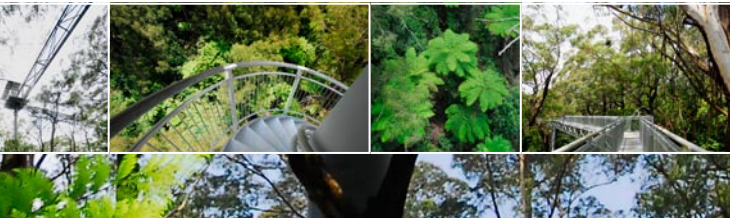


ILLAWARRA FLY TREE TOP WALK & CAFÉ



for the benefit of all please observe the following:

- Please ensure all children are accompanied by a responsible adult.
- DO NOT climb the railings.
- Please ensure appropriate footwear is worn (flat shoes only).
- Please keep to the paths, to minimise any negative impact on the environment.
- Please refrain from running and making excessive noise.
- All flora is to remain intact.
- Thankyou for respecting our environment enabling all to enjoy this experience.
- A shuttle service exists primarily for guests with limited mobility. The shuttle service runs approximately every 30 minutes from the walkway entrance (#9 on your map).



illawarra
fly
tree top walk

For further enquiries please contact us on: **1300 362 881** (toll free)
182 Knights Hill Road, Knights Hill NSW
(10 minutes from Robertson via Jamberoo Mountain Road)
www.illawarrafly.com.au e: manager@illawarrafly.com.au

WestonPrint (02) 4232 1999



1. Visitor Centre

Our eco-friendly visitor centre provides; café, retail, visitor information and toilets.

2. Native Mulberry

(Hedycarya angustifolia)
The Native Mulberry is identified by its shiny opposite leaves, which have very prominent veins. Parrots and other birds love the yellow fruit that appear in summer.

3. Forest facts

The forest on this site is a mixture of tall moist eucalypt forest and rainforest. The rainforest here is called 'warm temperate' rainforest. Warm temperate rainforest contains fewer tree species than subtropical rainforest and there are few, if any, large woody vines, but ferns are common.

4. Lilly Pilly (*Syzygium smithii*)

Lilly Pilly is one of the most common and widespread rainforest tree species in this district. An attractive tree with pinkish bark, dark green glossy leaves and colourful fruit, ranging from white to purple favoured by birds such as the Lewin's Honeyeater.

5. Sassafras

(Doryphora sassafras)
A medium sized tree with dark green glossy serrated leaves. Sassafras is one of the most common rainforest tree species along the Illawarra Escarpment. The leaves have a strong spicy fragrance, especially when crushed.

6. Wombat Junction

Please do not disturb!! Look closely, can you see the wombat burrow. The common wombat (*Vombatus ursinus*) lives here.

7. The Black Stump

The burnt stump in front of you was probably caused as a result of lightning strike many years ago.

8. Tree Ferns

Rough Tree Fern (*Cyathea*

australis) and **Soft Tree Fern** (*Dicksonia antarctica*). The name gives the game away ... Touch the stems of the fronds to feel the difference ... Some are smooth and some are rough.

9. Walkway Entrance

With only ten towers supporting the 500 metre long structure, the Illawarra Fly is designed to have little impact on the environment. *Many will experience the forest but none will touch the ground...*

10. Tower 1 – 10 metres up Vines and Creepers

Vines growing in rainforest are often extremely vigorous, e.g. **Wonga Vine** (*Pandorea pandorana*). Really old vines can develop a strong woody stem.

11. Tower 2 – 18 metres up Eucalypts

Brown Barrel (*Eucalyptus fastigata*), which is the most common tree species, has brown stringy bark on its trunk and large branches, and smooth bark on the upper branches.

Gully Gum (*Eucalyptus smithii*), can be seen near the southern tower. It has rough bark on its lower trunk, with smooth bark up most of the trunk and on its branches

12. Tower 3 – 22 metres up – Cantilever

– *Go to the edge!!*

What can you see?

Lake Illawarra, Port Kembla, Shellharbour, Bass point.

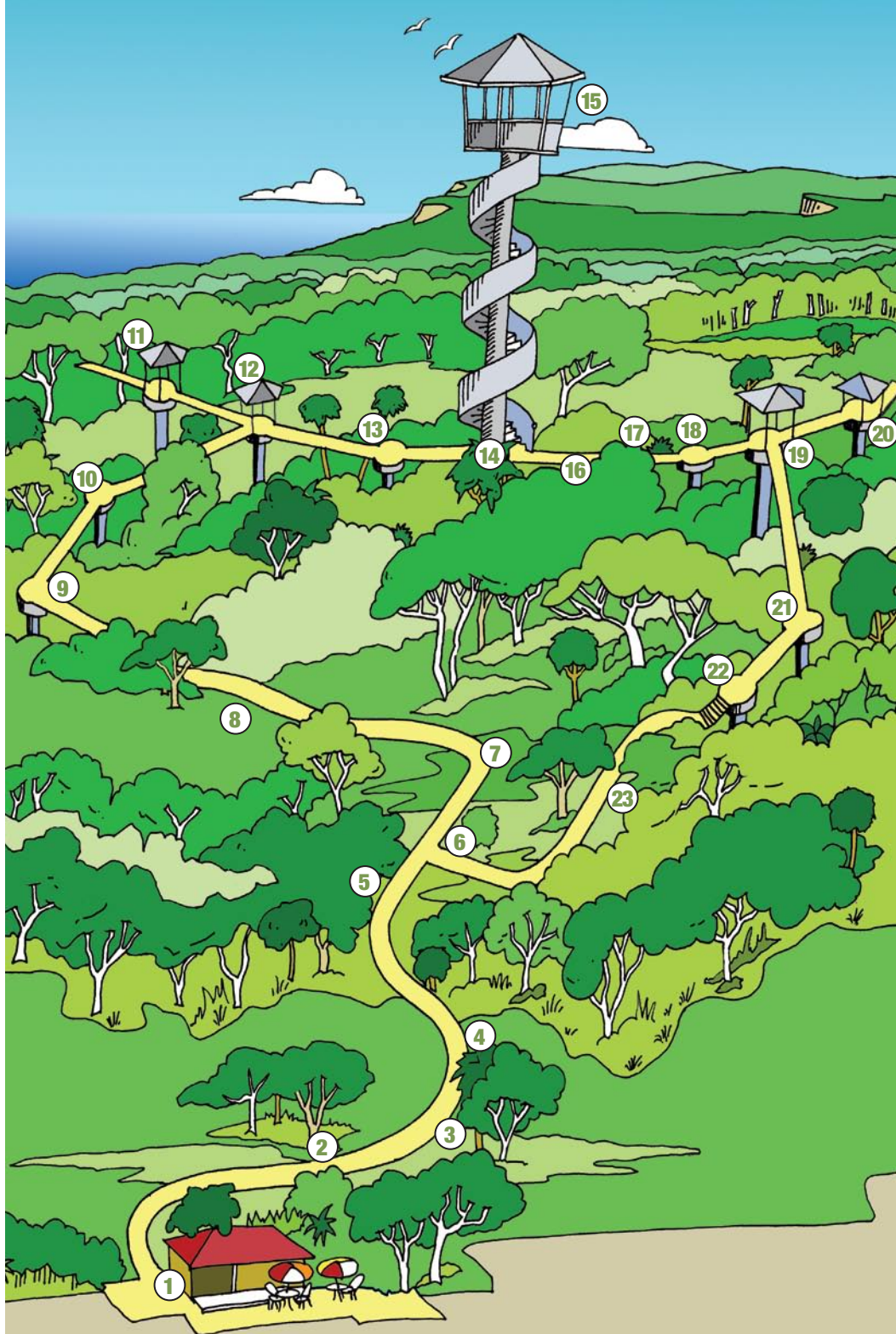
13. Tower 4 – 20 metres up Illawarra Flyers – Stop...

look...listen...

Yellow-tailed Black-Cockatoo (*Calyptorhynchus funereus*), **Crimson Rosella** (*Platycercus elegans*),

Laughing Kookaburra

(*Dacelo novaeguineae*), **Powerful Owl** (*Ninox strenua*), **Eastern Whipbird** (*Psophodes olivaceus*), **White-naped Honeyeater** (*Melithreptus lunatus*), **Eastern Yellow Robin** (*Eopsaltria australis*).



14. Tower 5 – 22 metres up Forest Beauties

Tree ferns deserve their reputation as forest 'beauties'. The lush and decorative fronds of the tree ferns, below, reflect the cool and moist conditions within the forest.

15. Tower 5 – 45 metres up – Knights Tower

– Birds eye view...

Climb the spiral staircase to the highest point of the Illawarra Fly Treetop Walk. 45 metres above the forest floor, admire the unique views from the Illawarra Escarpment.

16. Treetop housing

Tree hollows are important for many native animals. They are used by birds such as parrots and owls for nesting, and by possums and gliders for 'denning' and rearing their young.

17. Tower 6 – 22 metres up Light Gaps

The gap among the trees in front of you was caused many years ago when one or two large trees were cut down or fell down, perhaps during a violent wind storm. The gap in the tree canopy allowed sunlight to penetrate to the floor of the forest. Stimulated by the light, the gap was quickly filled by a dense tangle of vines, creepers and other small plants.

18. Tower 7 – 21 metres up Tree Top Walks

There are only four steel tree top walks in the world. All of them are in Australia.

- Illawarra Fly Tree Top Walk Illawarra, NSW
- Otway Fly Tree Top Walk Great Ocean Road, Victoria
- Tahune Airwalk Tahune State Forest, Tasmania
- Valley of the Giants Tree Top Walk Walpole-Nornalup National Park, WA.

19. Tower 8 – 20 metres up Construction Phase

• Commencing in September 2007 and completed in February 2008, the Illawarra

Fly Tree Top Walk took 6 months to construct.

- A crew of 6 assembled and erected the structure on site.
- There are ten support towers.
- Each span between the towers is 40 metres long.
- Each tower has 3 support cables for stability.
- Approximately 400m³ of concrete was used for the footings.

20. Tower 9 – 26 metres up – Cantilever

– *Go to the edge!!*

Illawarra Escarpment

Here before you is the classic profile of the Illawarra Escarpment and coast – rugged sandstone cliffline, steep slopes and then gentle foothills leading down onto the coastal plain and, finally, the beaches and headlands.

21. Tower 10 – 11 metres up Blackwood

(*Acacia melanoxylon*)

This tree does not have real leaves; instead, it has leaf-like modified stems called 'phyllodes'. The balls of light yellow flowers can be seen from late winter to spring. Blackwood produces a dark timber often used in the manufacture of furniture.

22. Walkway Exit Epiphytes

Epiphytes are plants that grow on other plants but do not harm them. Look around; can you spot the epiphytes on the trees? See how many different epiphytes you can recognise.

23. Marvellous Mosses

A moss is a plant that is small and soft, often with a velvety texture. They usually grow as a damp mat in a shady location. Mosses don't have flowers or seeds, and their simple leaves are on a narrow stem.

Illustration not to scale.